

Wyvis



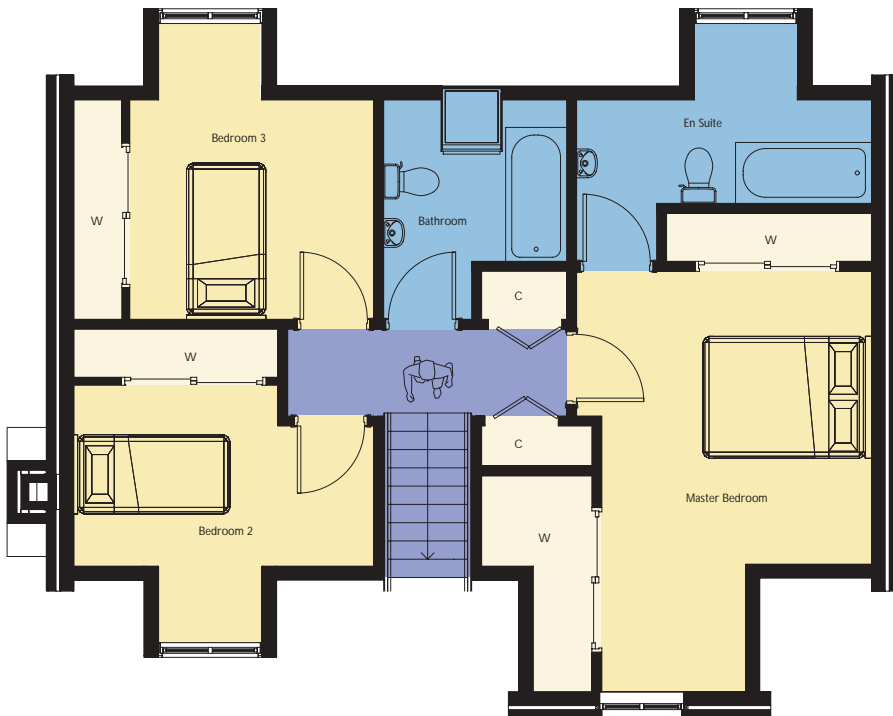
2 Public Rooms/Open Fire
Kitchen/Utility
4 Bedrooms (1 En-suite)
Ample Storage
Bathroom/W.C.
Garage
Oil C.H./Many Extras

developing a complete lifestyle



GROUND FLOOR		
LOUNGE	5.1m x 3.8m	16'8" x 12'6"
KITCHEN	3.8m x 3.7m	12'6" x 12'1"
FAMILY ROOM	3.8m x 3.7m	12'6" x 12'1"
UTILITY	2.3m x 2.0m	7'6" x 6'6"
BEDROOM 4	3.7m x 2.8m	12'1" x 9'2"
GARAGE	6.0m x 3.0m	19'8" x 9'10"

GROUND FLOOR



FIRST FLOOR		
MASTER BEDROOM	3.6m x 3.4m	11'9" x 11'2"
EN-SUITE	3.6m x 1.3m	11'9" x 4'3"
BEDROOM 2	3.7m x 2.3m	12'1" x 7'5"
BEDROOM 3	3.0m x 2.7m	9'10" x 8'11"

FIRST FLOOR

Traditional 4 bedroom house includes master bedroom (en-suite), family room, kitchen/utility and garage.